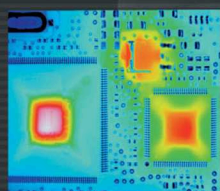
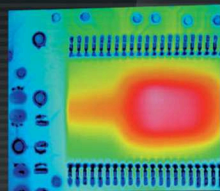


**NEW****High Quality Image  
with 640 x 480 IR Resolution****NEC**

# H2640/H2630

**High Resolution  
Infrared Thermal Imager**

640 x 480 UFPA Detector

Resolution: 0.03°C (H2640)

Frame Time: 30frames/sec

Auto Focusing

Visible Camera

Thermal/Visual Fusion

Real-Time Memory (H2640)

Data Transfer via IEEE 1394

Voice Recording

IP54 Environment Rating

**Capture More Details. Expanded Applications.  
Excellent Infrared Image Quality. Enhanced Ease of Use.**

## Product Features

### High Performance

- ◆ 640 x 480 Pixel High Quality Image
- ◆ Resolution: 0.03°C (H2640)  
0.04°C (H2630)

### Visual/Thermal Image Fusion Function

- ◆ Visible Camera Built-in
- ◆ Overlaid Display of Thermal and Visual Images

### Moving Image Recordable

- ◆ Internal high-speed memory stores up to 832 images (H2640)
- ◆ Data transfer via IEEE1392

### Excellent Auxiliary Functions

- ◆ Automatic Focusing
- ◆ Built-in LED Light & Laser Pointer
- ◆ Voice & Text Annotations

### Various Measuring Functions

- ◆ Multiple Emissivity Correction in Real-Time
- ◆ Multi-Focus Function (H2640)
- ◆ External Trigger Recording

### Wide 5.6-inch LCD

- ◆ Less power consumption with an LCD backlight
- ◆ Easy to see outdoors
- ◆ Images can be rotated 180°

### Excellent Ergonomics for Easy Field Work

- ◆ Battery Life: Approx. two (2) hours
- ◆ IP54 Environmental Protection
- ◆ 200g less than previous TH9260

### Multi-Language Menu

- ◆ English, French, Portuguese, Spanish, German Traditional Chinese, Simplified Chinese, Korean, Russian, Italian, Japanese

**NEC Avio Infrared Technologies Co., Ltd.**

Contact: SOLTEC Corporation • 12977 Arroyo Street • San Fernando, CA 91340-1548  
Tel: (800) 423-2344 Ext. 411 • (818) 365-0800 Ext. 411 • Fax: (818) 365-7839  
Sales@SoltecCorp.com • www.SoltecCorp.com

ISO9001  
JQA-1598ISO14001  
JQA-EM0260  
HEAD OFFICE



## Specifications

Type	H2640	H2630
Measuring Range	-40° to 500°C Range 1: -20° to 60°C Range 2: -40° to 120°C Range 3: 0 to 500°C Range 4: 200° to 2000°C (optional) (Display 0° to 2000°C)	-40° to 500°C Range 1: -40° to 120°C Range 2: 0° to 500°C Range 3: 200° to 2000°C (optional) (Display 0° to 2000°C)
Resolution	0.06°C or better (at 30°C, 30Hz) 0.03°C or better (at 30°C, $\Sigma 64$ )	0.08°C or better (at 30°C, 30Hz) 0.04°C or better (at 30°C, $\Sigma 16$ )
Accuracy	$\pm 2^\circ\text{C}$ or $\pm 2\%$ or reading, whichever is greater	
Detector	Uncooled focal plane array (microbolometer)	
Spectral Range	8 to 13 $\mu\text{m}$	
I.F.O.V.	0.6mrad	
Focusing Range	30cm to infinity	
Field of View	21.7° (H) x 16.4° (V)	
Frame Rate	30 frames/sec	
Display	View finder & 5.6-inch movable color LCD	
Thermal Image Pixels	640(H) x 480(V) pixels	
A/D Resolution	14bits	
Measuring Functions	Run/Freeze	
Alarm	Screen display and alarm sound (ON/OFF)	
S/N Improvement	$\Sigma 2, \Sigma 8, \Sigma 16, \Sigma 32, \Sigma 64$	
Moving Recording (H2640 only)	Real-Time Memory: up to 832 images (max 30Hz)	
Interval Measurement	Recording on built-in real time memory: 1/30 to 3600sec interval (H2640) Recording on memory card: 5 to 3600sec interval (thermal image) 30 to 3600sec (thermal & visual images) Trigger function provided	
Emissivity Correction	Provided (0.10 to 1.00). Emissivity table provided.	
Env. Temperature Correction	Provided (including interval NUC)	
User Setup	Pre-registration of environmental setup (up to 10 setups)	
Background Compensation	Provided	
Distance Correction	Provided	
Auto Functions	Full Automatic (level, sense, focus), Level Trace, Auto-Gain Control	
Thermal/Visual Image Fusion	Provided	
Visible Light Camera	1.31 Mega pixels. Focusing Distance: 30cm to infinity	
Display Functions	Display Color: Color/Monochrome, Positive/Negative Gradation: 16, 32, 64, 128, 256 Color Palette: Rainbow, Brightness, Shine, Hot-Iron, Medical, Fine Isothermal Band Display: Max. four (4) bands, movable Thumbnail Display: 12 Thermal Images Replay Image Rotation: 180° rotation Multi-Sense Display, Battery Life Indicator Waveform Display: X-Y Line Waveform at Freeze Mode Multilingual Menu	
Digital Zoom	x2, x4, x8	x2, x4
Multi-Point Temperature Display	Up to 10 points	Up to 5 points
Multi-Point Emissivity Correction	Up to 10 points	Up to 5 points
Multi-Focus* (H2640 only)	On/Off, Temperature Threshold (1° to 100°C, 1°C step), Images to capture (16 or 32), Direction of Edge Detection (Horizontal, Vertical, Horizontal & Vertical)	
Image Processing Functions	Variable Level/Sense Temperature difference between two (2) points ( $\Delta t$ ) Max/Min (peak hold) Temperature Display Alarm (full screen or specified box) BOX setting, up to five (5) boxes (max, min, average) Sharpness Filter, Median Filter, Average Filter	
Annotation	Text and Voice Annotation (30sec per image)	
Storage Device	Compact Flash Memory Card for: Thermal Image in SIX or BMP file format Visual Image in SIX or JPEG file format	
Video Signal Output Interfaces	NTSC/PAL, Composite Video Signal, S-Video IEEE1394a, RS-232C, USB1.1/2.0 (Mass Storage) Compact Flash Memory Card Slot	
Operating Temperature	-15° to 50°C, 90%RH or less (non condensing)	
Storage Temperature	-40° to 70°C, 91%RH or less (non condensing)	
Power Supply	AC Adapter, DC 7.2V (nominal)	
Power Consumption	Approx. 9W (typical)	
Shock & Vibration	Shock: 294m/s <sup>2</sup> (30G) (IEC60068-2-27) Vibration: 29.4m/s <sup>2</sup> (3G) (IEC60068-2-6)	
Water/Dust Proof Rating	IP54 (IEC60529)	
Dimensions & Weight	Approx. 110(W) x 110(H) x 210(D) mm (excluding projections) Approx. 1.5kg (without Battery, LCD) Approx. 1.7kg (with Battery, LCD)	
Software Included	NS9200 Report Generator & NS9200LT NS9200LT Report Generator (Limited Version)	

\*Image with multi-focus may not be obtained if there is little temperature difference.

Standard Accessories: AC Adapter, Battery Pack (2pcs), Battery Charger, Compact Flash Memory Card & Adapter  
USB Cable, Target Illuminator, Carrying Case, Grip Belt, Neck Strap, Lens Cap & Operation Manual.

## Options

Model	Product Name	Description
TH71-334, 359, 360	AC Adapter	Safety Standard: PSE, UL, CE, CSA (334: 110V PSE, 359: 220-240V CE, 360: 110V UL)
TH91-464	Battery Pack	Lithium-ion Battery
TH71-339, 340	Battery Charger	With two (2) Battery Slots (339: 200-240V, 340: 100-110V)
TA92-490	High Temperature Range	200° to 2000°C
TA92-482	10° Telephoto Lens (2x)	10.9° x 8.2° with Visual Camera; Focusing Range: 2m to infinity
TA92-483	42° Wide-Angle Lens (0.5x)	45.2° x 33.7° with Visual Camera; Focusing Range: 0.3m to infinity
TA92-486	100 $\mu\text{m}$ Close-up Lens	Min Detectable Size: 100 x 100 $\mu\text{m}$ Scan Range: 64 x 48mm Working Distance: 195mm (Add-on Type)
TA92-485	25 $\mu\text{m}$ Close-up Lens	Min Detectable Size: 25 x 25 $\mu\text{m}$ Scan Range: 16 x 12mm Working Distance: 11mm (Add-on Type)
TA92-488	Lens Adapter	For attaching TH9100 Close-up Lenses to H2600 Series (Applicable Lenses: TH91-385/386)
TA92-491	2nd Year Product Warranty	Except Temperature Calibration

## Software

Model	Product Name	Description
NS9100	Data Capture Software with Trigger Function	Requires Windows XP (Professional) Service Pack 2 (or newer), Windows 2000 (Professional) Service Pack 4 (or newer), or Windows Vista Ultimate. Microsoft Excel and Word are also required for operation of some functions. <sup>1,2</sup>
TH91-157	External Trigger Box	For NS9100. Trigger Input & Output up to four (4) points each.
NS9200	Report Generator Software	Requires Windows XP (Professional) Service Pack 2 (or newer), or Windows 2000 (Professional) Service Pack 4 (or newer), or Windows Vista Ultimate. Microsoft Excel and Word (2000, 2002, or 2003) are also required for operation of some functions. <sup>3</sup>
NS9300	Image Processor Pro II Software	Requires Windows XP (Home Edition/Professional) Service Pack 2 (or newer), Windows 2000 (Professional) Service Pack 4 (or newer), or Windows Vista Ultimate. Microsoft Excel and Word are also required for operation of some functions. <sup>4,5</sup>
TH92-717	IEEE1394 Data Capture Software with Cable	For real-time image data transfer via IEEE1394, with 4m cable.

<sup>1</sup> Microsoft Excel (2000, 2003 or 2007) required for data conversion (CSV format) & report generation.

Microsoft Word (2000, 2003 or 2007) required for report generation.

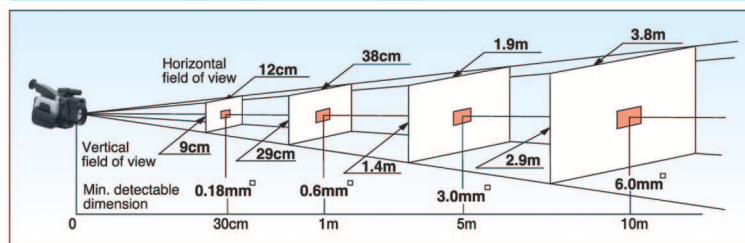
<sup>2</sup> Data capture function requires IEEE1394.

<sup>3</sup> Data-Capture-on-Excel function requires IEEE1394.

<sup>4</sup> Microsoft Excel (2000, 2003 or 2007) required for data conversion (CSV format) & report generation.

<sup>5</sup> Data capture feature requires IEEE1394.

## Field of View Diagram (Thermal Image)



## CAUTIONS & WARNINGS

- Before using this product, please carefully read the provided Operation Manual "WARNING" & "CAUTION" section to ensure proper operation.

Additional Contact:

**THERMAL**  
TECHNIQUES

1409 East Blvd. Charlotte, NC 28203 • (704) 343-0888 • www.ttinfrared.com

Contact:

**SOLTEC®**

12977 Arroyo Street  
San Fernando, CA 91340-1548  
Toll Free: (800) 423-2344 Ext. 411  
Direct: (818) 365-0800 Ext. 411  
Fax: (818) 365-7839  
Sales@SoltecCorp.com  
www.SoltecCorp.com